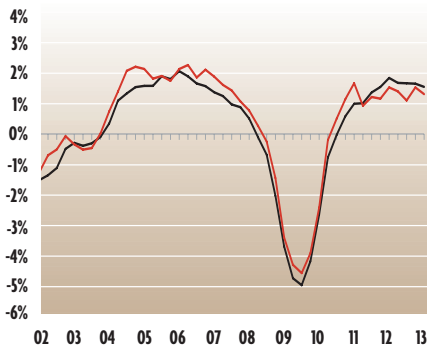


STATE DATA, Q1:13

	DC	MD	NC	SC	VA	WV
Nonfarm Employment (000s)	734.2	2,604.1	4,047.9	1,878.1	3,753.3	768.4
Q/Q Percent Change	0.0	0.7	0.6	0.3	0.3	0.2
Y/Y Percent Change	0.5	1.3	2.0	1.4	0.9	0.1
Manufacturing Employment (000s)	0.9	105.8	446.0	220.8	233.9	48.8
Q/Q Percent Change	0.0	0.3	0.9	-0.1	0.6	-0.6
Y/Y Percent Change	-12.9	-4.2	1.8	1.0	0.6	-2.1
Professional/Business Services Employment (000s)	155.3	419.9	543.4	227.3	679.2	64.8
Q/Q Percent Change	0.5	1.4	0.9	-2.0	-0.5	-0.7
Y/Y Percent Change	1.7	3.0	2.7	-1.4	0.6	0.5
Government Employment (000s)	241.0	505.4	716.1	349.8	717.7	154.2
Q/Q Percent Change	-0.3	0.1	0.1	-0.3	0.4	-0.3
Y/Y Percent Change	-1.3	-0.2	0.4	1.5	1.0	-0.2
Civilian Labor Force (000s)	372.8	3,141.5	4,761.0	2,176.7	4,228.2	808.6
Q/Q Percent Change	1.0	0.1	0.1	0.4	0.3	0.1
Y/Y Percent Change	5.3	1.0	1.3	0.4	0.3	0.8
Unemployment Rate (%)	8.6	6.6	9.4	8.6	5.5	7.2
Q4:12	8.5	6.7	9.4	8.7	5.7	7.5
Q1:12	9.3	6.7	9.5	9.4	5.9	7.0
Real Personal Income (\$Mil)	44,580.5	298.0	349.6	155.8	373.5	61,232.1
Q/Q Percent Change	-1.1	-1.1	-0.9	-1.4	-1.5	-0.9
Y/Y Percent Change	0.1	0.0	1.4	0.2	0.7	0.2
Building Permits	335	3,819	11,274	5,207	6,938	514
Q/Q Percent Change	-78.6	-1.7	-12.4	13.9	1.3	5.8
Y/Y Percent Change	28.8	26.8	1.3	17.9	5.6	33.9
House Price Index (1980=100)	609.4	407.7	301.2	304.7	396.5	2214.2
Q/Q Percent Change	1.9	0.1	-0.2	0.0	-0.2	-0.2
Y/Y Percent Change	5.9	0.7	0.3	0.4	0.9	0.9

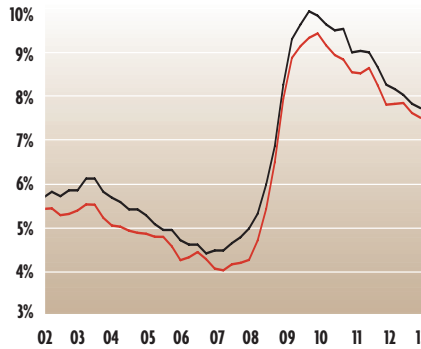
Nonfarm Employment

Change From Prior Year
First Quarter 2002 - First Quarter 2013



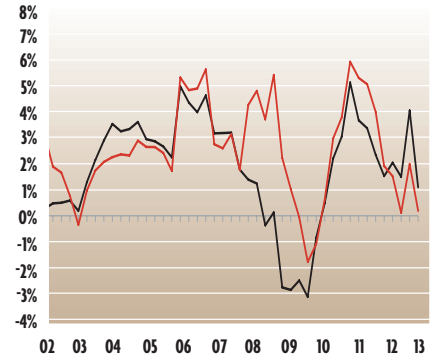
Unemployment Rate

First Quarter 2002 - First Quarter 2013



Real Personal Income

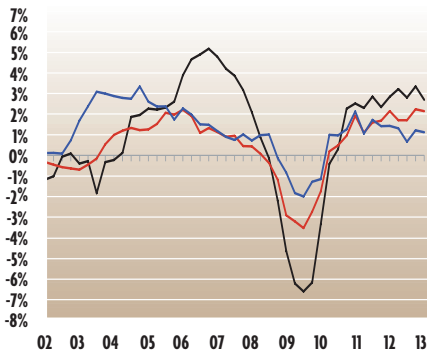
Change From Prior Year
First Quarter 2002 - First Quarter 2013



— Fifth District — United States

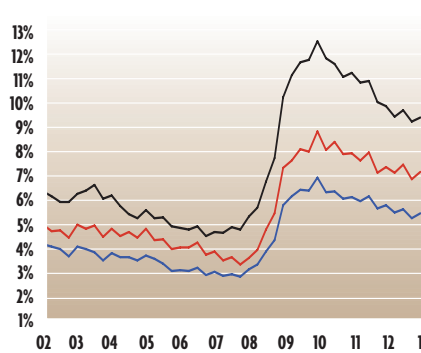
Nonfarm Employment Metropolitan Areas

Change From Prior Year
First Quarter 2002 - First Quarter 2013



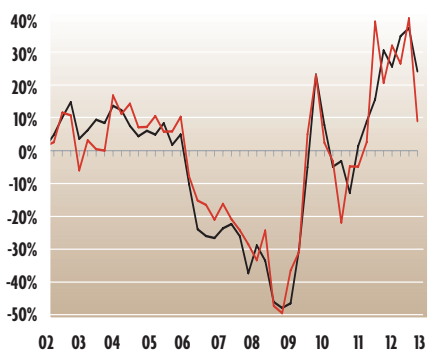
Unemployment Rate Metropolitan Areas

Change From Prior Year
First Quarter 2002 - First Quarter 2013



Building Permits

Change From Prior Year
First Quarter 2002 - First Quarter 2013



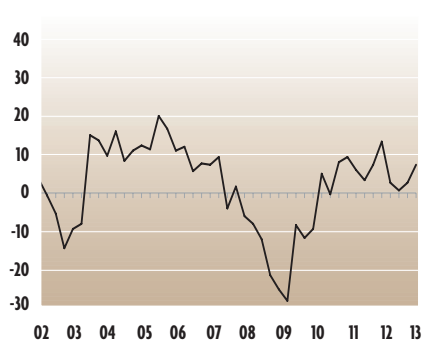
— Charlotte — Baltimore — Washington

— Charlotte — Baltimore — Washington

— Fifth District — United States

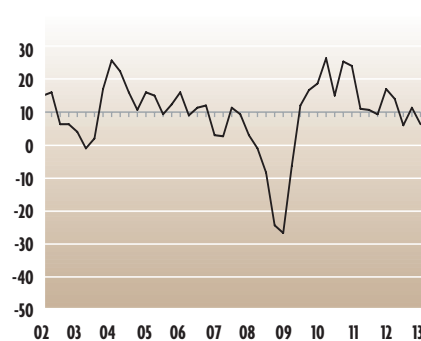
FRB—Richmond Services Revenues Index

First Quarter 2002 - First Quarter 2013



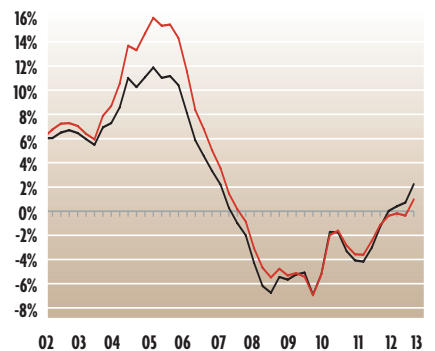
FRB—Richmond Manufacturing Composite Index

First Quarter 2002 - First Quarter 2013



House Prices

Change From Prior Year
First Quarter 2002 - First Quarter 2013



— Fifth District — United States

NOTES:

1) FRB-Richmond survey indexes are diffusion indexes representing the percentage of responding firms reporting increase minus the percentage reporting decrease. The manufacturing composite index is a weighted average of the shipments, new orders, and employment indexes.
2) Building permits and house prices are not seasonally adjusted; all other series are seasonally adjusted.

SOURCES:

Real Personal Income: Bureau of Economic Analysis/Haver Analytics.
Unemployment rate: LAUS Program, Bureau of Labor Statistics, U.S. Department of Labor, <http://stats.bls.gov>.
Employment: CES Survey, Bureau of Labor Statistics, U.S. Department of Labor, <http://stats.bls.gov>.
Building permits: U.S. Census Bureau, <http://www.census.gov>.
House prices: Federal Housing Finance Agency, <http://www.fhfa.gov>.