

# STATE DATA, Q4:15

	DC	MD	NC	SC	VA	WV
<b>Nonfarm Employment (000s)</b>	<b>768.2</b>	<b>2,680.3</b>	<b>4,268.7</b>	<b>2,027.2</b>	<b>3,893.2</b>	<b>761.2</b>
Q/Q Percent Change	0.2	0.6	0.4	0.8	0.8	0.1
Y/Y Percent Change	1.1	1.6	2.1	2.7	2.6	-1.4
<b>Manufacturing Employment (000s)</b>	<b>1.1</b>	<b>105.8</b>	<b>459.1</b>	<b>237.5</b>	<b>234.1</b>	<b>47.1</b>
Q/Q Percent Change	-2.9	1.7	-0.5	0.6	0.3	-1.1
Y/Y Percent Change	0.0	2.1	1.0	1.8	1.0	-1.3
<b>Professional/Business Services Employment (000s)</b>	<b>162.2</b>	<b>434.0</b>	<b>600.5</b>	<b>271.2</b>	<b>709.7</b>	<b>67.0</b>
Q/Q Percent Change	0.3	0.7	1.4	2.9	1.7	0.6
Y/Y Percent Change	2.2	1.8	4.0	3.7	3.9	-2.0
<b>Government Employment (000s)</b>	<b>238.8</b>	<b>503.2</b>	<b>718.8</b>	<b>362.3</b>	<b>710.7</b>	<b>152.3</b>
Q/Q Percent Change	0.2	0.2	-0.4	0.5	-0.3	0.7
Y/Y Percent Change	1.0	-0.1	0.4	1.2	0.0	-0.5
<b>Civilian Labor Force (000s)</b>	<b>390.4</b>	<b>3,157.7</b>	<b>4,777.2</b>	<b>2,260.8</b>	<b>4,236.7</b>	<b>782.9</b>
Q/Q Percent Change	0.3	0.2	0.3	0.3	0.3	-0.2
Y/Y Percent Change	1.7	0.8	1.8	1.0	0.0	0.1
<b>Unemployment Rate (%)</b>	<b>6.6</b>	<b>5.0</b>	<b>5.6</b>	<b>5.5</b>	<b>4.2</b>	<b>6.3</b>
Q3:15	6.7	5.1	5.7	5.6	4.2	6.7
Q4:14	7.6	5.5	5.8	6.6	4.9	6.4
<b>Real Personal Income (\$Bil)</b>	<b>45.4</b>	<b>310.6</b>	<b>378.9</b>	<b>174.1</b>	<b>403.2</b>	<b>61.9</b>
Q/Q Percent Change	0.5	1.0	0.9	1.2	0.7	-0.2
Y/Y Percent Change	5.3	3.5	4.0	4.8	3.9	0.8
<b>Building Permits</b>	<b>1,508</b>	<b>3,472</b>	<b>12,549</b>	<b>6,287</b>	<b>7,253</b>	<b>591</b>
Q/Q Percent Change	51.1	-22.3	-4.5	-25.6	-17.5	-26.8
Y/Y Percent Change	119.8	-8.1	-0.6	-3.9	5.2	10.3
<b>House Price Index (1980=100)</b>	<b>774.0</b>	<b>438.8</b>	<b>329.8</b>	<b>335.7</b>	<b>426.6</b>	<b>227.8</b>
Q/Q Percent Change	2.1	0.5	0.6	1.0	0.7	0.3
Y/Y Percent Change	7.8	2.4	4.9	5.6	2.5	2.7

**NOTES:**

- 1) FRB-Richmond survey indexes are diffusion indexes representing the percentage of responding firms reporting increase minus the percentage reporting decrease. The manufacturing composite index is a weighted average of the shipments, new orders, and employment indexes.
- 2) Building permits and house prices are not seasonally adjusted; all other series are seasonally adjusted.
- 3) Manufacturing employment for DC is not seasonally adjusted

**SOURCES:**

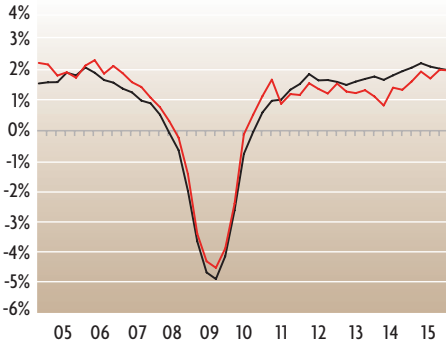
Real Personal Income: Bureau of Economic Analysis/Haver Analytics.  
 Unemployment Rate: LAUS Program, Bureau of Labor Statistics, U.S. Department of Labor/Haver Analytics  
 Employment: CES Survey, Bureau of Labor Statistics, U.S. Department of Labor/Haver Analytics  
 Building Permits: U.S. Census Bureau/Haver Analytics  
 House Prices: Federal Housing Finance Agency/Haver Analytics

For more information, contact Michael Stanley at (804) 697-8437 or e-mail [michael.stanley@rich.frb.org](mailto:michael.stanley@rich.frb.org)

### Nonfarm Employment

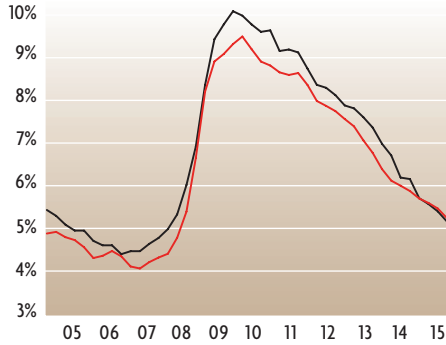
Change From Prior Year

Fourth Quarter 2004 - Fourth Quarter 2015



### Unemployment Rate

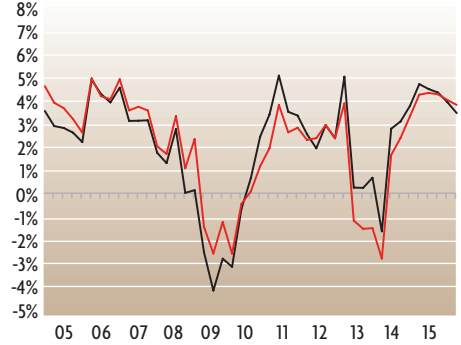
Fourth Quarter 2004 - Fourth Quarter 2015



### Real Personal Income

Change From Prior Year

Fourth Quarter 2004 - Fourth Quarter 2015

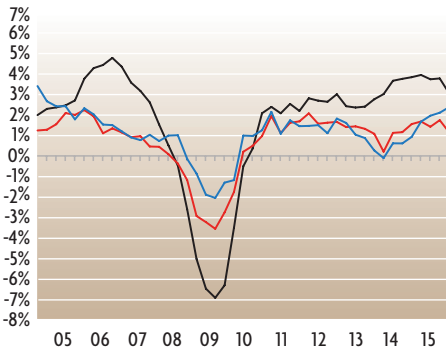


— Fifth District — United States

### Nonfarm Employment Major Metro Areas

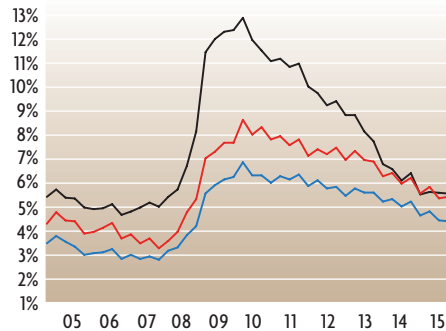
Change From Prior Year

Fourth Quarter 2004 - Fourth Quarter 2015



### Unemployment Rate Major Metro Areas

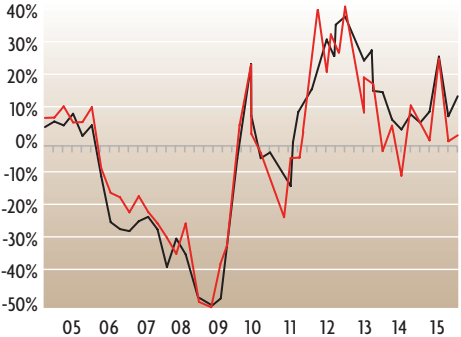
Fourth Quarter 2004 - Fourth Quarter 2015



### Building Permits

Change From Prior Year

Fourth Quarter 2004 - Fourth Quarter 2015



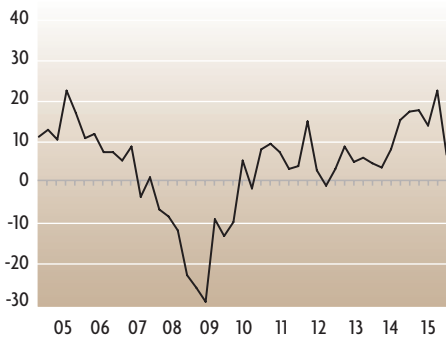
— Charlotte — Baltimore — Washington

— Charlotte — Baltimore — Washington

— Fifth District — United States

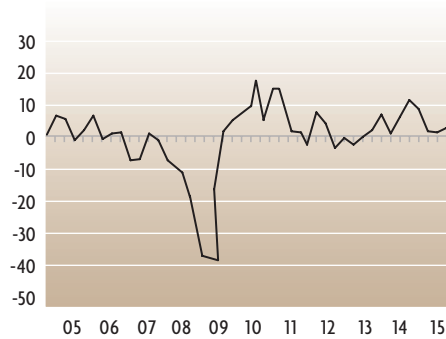
### FRB—Richmond Services Revenues Index

Fourth Quarter 2004 - Fourth Quarter 2015



### FRB—Richmond Manufacturing Composite Index

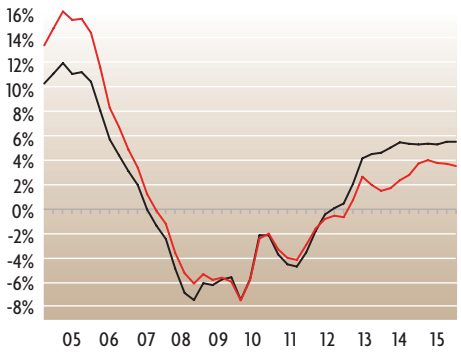
Fourth Quarter 2004 - Fourth Quarter 2015



### House Prices

Change From Prior Year

Fourth Quarter 2004 - Fourth Quarter 2015



— Fifth District — United States

# METROPOLITAN AREA DATA, Q4:15

	Washington, DC	Baltimore, MD	Hagerstown-Martinsburg, MD-WV
<b>Nonfarm Employment (000s)</b>	<b>2,622.7</b>	<b>1,383.6</b>	<b>104.8</b>
Q/Q Percent Change	1.2	1.0	1.4
Y/Y Percent Change	2.4	1.1	-2.0
<b>Unemployment Rate (%)</b>	<b>4.3</b>	<b>5.2</b>	<b>5.0</b>
Q3:15	4.3	5.2	5.4
Q4:14	4.9	5.8	5.8
<b>Building Permits</b>	<b>6,039</b>	<b>1,266</b>	<b>196</b>
Q/Q Percent Change	-0.7	-37.7	-16.2
Y/Y Percent Change	21.6	-25.3	-40.8

	Asheville, NC	Charlotte, NC	Durham, NC
<b>Nonfarm Employment (000s)</b>	<b>185.8</b>	<b>1,126.6</b>	<b>298.9</b>
Q/Q Percent Change	2.1	2.3	1.6
Y/Y Percent Change	3.0	3.1	1.3
<b>Unemployment Rate (%)</b>	<b>4.5</b>	<b>5.3</b>	<b>5.0</b>
Q3:15	4.6	5.4	5.0
Q4:14	4.7	5.7	4.9
<b>Building Permits</b>	<b>438</b>	<b>5,003</b>	<b>1,107</b>
Q/Q Percent Change	-14.5	10.7	-5.6
Y/Y Percent Change	36.9	22.5	4.9

	Greensboro-High Point, NC	Raleigh, NC	Wilmington, NC
<b>Nonfarm Employment (000s)</b>	<b>361.0</b>	<b>594.7</b>	<b>120.4</b>
Q/Q Percent Change	2.2	1.7	-0.6
Y/Y Percent Change	1.9	3.6	2.1
<b>Unemployment Rate (%)</b>	<b>5.8</b>	<b>4.7</b>	<b>5.5</b>
Q3:15	5.9	4.7	5.5
Q4:14	6.1	4.8	5.5
<b>Building Permits</b>	<b>604</b>	<b>2,447</b>	<b>321</b>
Q/Q Percent Change	-14.6	-14.3	-29.1
Y/Y Percent Change	-12.1	-18.9	-48.3

NOTE:  
Nonfarm employment and building permits are not seasonally adjusted. Unemployment rates are seasonally adjusted.

	Winston-Salem, NC	Charleston, SC	Columbia, SC
<b>Nonfarm Employment (000s)</b>	<b>259.4</b>	<b>337.7</b>	<b>392.5</b>
Q/Q Percent Change	1.3	0.6	2.2
Y/Y Percent Change	1.0	3.1	2.2
<b>Unemployment Rate (%)</b>	<b>5.4</b>	<b>4.7</b>	<b>5.2</b>
Q3:15	5.5	4.8	5.2
Q4:14	5.5	5.8	6.0
<b>Building Permits</b>	<b>289</b>	<b>1,384</b>	<b>934</b>
Q/Q Percent Change	17.3	-29.3	-29.6
Y/Y Percent Change	-18.4	-0.8	5.8

	Greenville, SC	Richmond, VA	Roanoke, VA
<b>Nonfarm Employment (000s)</b>	<b>409.3</b>	<b>669.6</b>	<b>163.7</b>
Q/Q Percent Change	1.7	2.5	1.6
Y/Y Percent Change	3.2	4.3	1.3
<b>Unemployment Rate (%)</b>	<b>4.8</b>	<b>4.3</b>	<b>4.1</b>
Q3:15	5.0	4.4	4.2
Q4:14	6.0	5.2	4.9
<b>Building Permits</b>	<b>998</b>	<b>1,398</b>	<b>N/A</b>
Q/Q Percent Change	-41.8	-4.0	N/A
Y/Y Percent Change	-22.9	69.7	N/A

	Virginia Beach-Norfolk, VA	Charleston, WV	Huntington, WV
<b>Nonfarm Employment (000s)</b>	<b>771.2</b>	<b>123.4</b>	<b>142.5</b>
Q/Q Percent Change	-0.1	0.6	2.1
Y/Y Percent Change	1.3	-2.3	-1.0
<b>Unemployment Rate (%)</b>	<b>4.7</b>	<b>6.0</b>	<b>6.1</b>
Q3:15	4.7	6.4	6.2
Q4:14	5.4	6.2	6.2
<b>Building Permits</b>	<b>1,216</b>	<b>58</b>	<b>36</b>
Q/Q Percent Change	-33.4	-6.5	0.0
Y/Y Percent Change	-24.7	1,060.0	0.0

For more information, contact Michael Stanley at (804) 697-8437 or e-mail [michael.stanley@rich.frb.org](mailto:michael.stanley@rich.frb.org)